

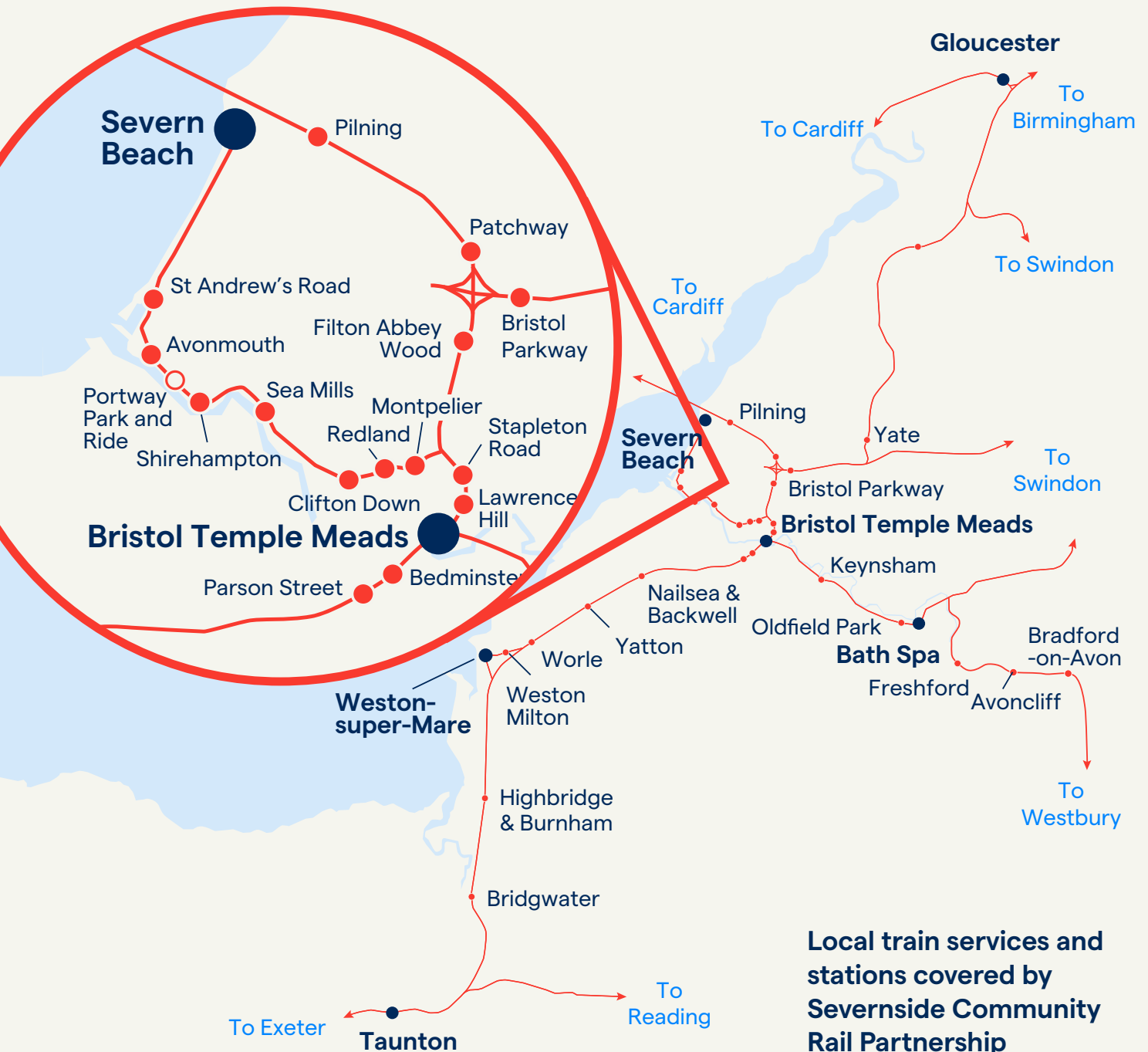
Severnside
Community Rail
Partnership c.i.c

Progress Report

Published May 2023



Creatively Connecting
People and Places



Contact Us

Chairman: Keith Walton
 Email: keith@severnside-rail.org.uk
 Tel: 07740 047 812

Partnership Manager: **Heather Cullimore**
 Email: heather@severnside-rail.org.uk
 Tel: 07795 562 311

Community Development Officer: **Faye Keane**
 Email: faye@severnside-rail.org.uk
 Tel: 07724 028 021

Platform Education Manager: **Emilie Dawson**
 Email: emilie@raileducation.org.uk
 Tel: 07464 953 914

Severnside Community Rail Partnership c.i.c
 c/o GWR, Temple Meads Station,
 Bristol, BS1 6QF

severnside-rail.org.uk

Cover photo:

Students from Woodlands Primary and Yate Academy join the launch of "In Our Hands" artwork at Patchway station

Welcome to the Severnside Community Rail Partnership

The Severnside Community Rail Partnership is the link between local communities and the rail industry. We cover the network of routes radiating from Bristol, bounded by Gloucester, Bath/Westbury, Weston-super-Mare, Taunton, and the Severn Estuary; this includes the branch line to Severn Beach. We work with local communities and a range of partners to identify and implement measures to ensure that access to the local rail network is easy and that stations are safe and welcoming.

Building confidence in using the local public transport network holds the utmost importance as recovery from the Covid-19 pandemic continues and the climate emergency deepens. A significant portion of the Partnership's activity is therefore dedicated to working with community groups on a range of initiatives designed to remove perceived barriers to rail and other forms of sustainable, healthy travel. To ensure sustainable travel choices are embedded in local communities from a young age, Severnside Community Rail Partnership hosts Platform, a Community Rail Education scheme, employing qualified teachers focused on delivering in-school workshops, assemblies, rail familiarisation visits and curriculum linked resources. Not only does this area of work encourage people to 'try the train', but it also enables the Partnership to hear the voices of those less likely to participate in public meetings or consultations. These schemes, including future plans, are described in greater detail in this Report.

The Partnership continues to support groups and individuals who have 'adopted' their local stations and volunteer tirelessly by tending station gardens and planters to create an attractive and welcoming gateway to their neighbourhood. Along with bringing new planters and signage to local stations, Community Artwork is a trademark of Community Rail across Severnside. New vibrant mural artworks can be found at Yatton and Filton Abbey Wood stations, while an innovative new Rail Arts Trail has been developed.

During August 2022, Severnside Community Rail Partnership received confirmation of the renewal of annual Accreditation from the Department of Transport. Formal Accreditation

provides assurance to others, including potential funders and partners, that the CRP operates to high standards of governance and financial propriety; adopts a collaborative approach; is worthy of trust by others; is a suitable entity for receiving public funds; and is a good representative of the local community.

The Partnership's work is overseen by a Board of Directors. Directors are nominated by Train Operators and Funding Authorities, together with several Independent Directors. We welcome expressions of interest to join the Board as an Independent Director – please contact Keith Walton (address on page 2 of this report).

I am very grateful for strong support from Heather Cullimore, the Partnership's Manager, from Faye Keane, the Community Development Officer, and Emilie Dawson, Platform Manager together with our staff, station volunteers and Board members – all of whom are essential to delivering our work.

Keith Walton, Chairman



Confidence Building Days Out

Days Out by Train helps people with perceived barriers to rail travel to enjoy an accompanied trip to build confidence and knowledge of their local rail travel options.

Support from the GWR Community Fund has enabled the visits to be offered completely free of charge. During 2022 the scheme had four targeted groups:

- the Deaf and Hard of Hearing Community
- People with Dementia and their carers
- Refugees and Asylum Seekers
- Elderly isolated people

Prior to an excursion, each group is visited, in their usual community setting, to talk through concerns and select a suitable destination.

Example trips include a group from a refugee support café in Weston-super-Mare travelling to explore Bristol City Centre and to Bath Spa Christmas Market for festive fun. Groups of older people have enjoyed trips to Weston for fish and chips and to view the 'SEE Monster' art installation; Centre for Deaf sewing groups visited a 'Sew Amazing' haberdashery in Bedminster, and groups including the Patchway memory café visited the Strawberry Line Café at Yatton station.

Over an eight-month period, 168 people benefitted from a Day Out by Train across 16 excursions.

"It was pleasant, and I enjoyed it a lot. Touring Bath was a new experience for me" – Zarmina, Refugees Welcome in North Somerset

"A very enjoyable day out. Thank you very much. Easy travel for our group living with dementia including wheelchairs and walkers." – member of Keynsham & Saltford Dementia Action Alliance

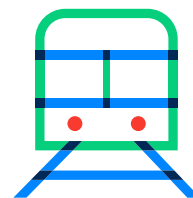
"Staff have made it (travelling by train) easier than I expected. Thank you for organising. We really enjoyed it. It was great to have a change of scene and to learn that going on the train is not so difficult."

100 % of participants said they enjoyed themselves on the trips

78 % of participants felt more confident to use the train after their experience.

Days Out by Train has a dedicated webpage and video: <https://severnside-rail.org.uk/days-out-by-train/>





Encouraging New Connections

Movement is a similar project to Days Out by Train, but with a specific focus on young people aged 16-24. The scheme is designed to build confidence in using the local railway and to help young people feel more socially connected. This is achieved through a series of accompanied trips by rail to explore nearby rural and coastal settings, to enjoy the wellbeing benefits of spending time out of doors. Example trips include a group of young carers visiting the Wild Place attraction in South Gloucestershire, and a group of young parents visiting Noah's Ark Zoo Farm, North Somerset. During the excursion young people have the opportunity to socialise and have been seen to build new friendships. Movement is one of three pilot schemes Community Rail Partnerships are delivering under the Department for Transport's Tackling Loneliness with Transport Fund.

"We've been looking for the right way to bring some of our most isolated young people together and this was just the ticket. We would like to build the partnership and build young people's experience of being active and out there". Carl Bowen, Creative Youth Network.



Movement Trip with 16-24 Independent People Young Parents Group to Noah's Ark Zoo Farm

Rail Cycle Adventures

Another GWR Community Fund Grant has enabled youth groups from Inner City Bristol to travel to Yatton station for an extra-special package put together by the Strawberry Line Café and Cycle Hire – the group cycle along the Strawberry Line with a delicious and nutritious picnic. The wide range of bikes offered ensures the activity is open both to young people who are experienced cyclists and to those who are developing their skills or benefit from an adapted bike.

Over a six-month period, 73 young people enjoyed a Rail Cycle Adventure Day. 25 of these young people had either a disability or lacked confidence in cycling and therefore benefited from the fleet of specially adapted bikes.

The project brought a new clientele to the Strawberry Line Café, and by doing so expanded the skills and experience of the adults with learning disabilities who staff the enterprise.

"All the young people enjoyed the train and got more confident with cycling. They especially enjoyed having a packed lunch and a hot chocolate after"



Young people set out from Yatton station on their cycle adventure

Platform



Platform is a Community Rail Education scheme, hosted by Severnside and covering Gloucestershire, Worcestershire, TransWilts and South Wessex Community Rail Partnerships.

The scheme employs a small team of qualified teachers to connect classrooms – and the young people within them – to their local railways through in-school workshops, train trips, and a dedicated website with bespoke, local, curriculum-linked teaching resources.

Following 2 years of disrupted learning – and with the current economic climate – schools are finding it extremely difficult to run school trips. So, instilling in them the confidence to use the railways for this is more important than ever, alongside giving the same confidence to young people as travellers of the future. Platform takes pride in being able to deliver a fully resourced rail experience, that is completely free to schools thanks to grant funding from GWR, CrossCountry Trains and the Community Rail Development Fund.

Additionally, the team has worked hard to identify free onward learning opportunities, that build cultural capital, and that allow young people to combine their rail education with an exciting and meaningful event.

The scheme has creatively developed a wide range of experiences visiting all corners of the Severnside CRP network. These include:

Confidence, Careers and Commuting

Young people supported by the charity South Bristol Youth travelled by train to Avonmouth for careers workshops hosted by Avonmouth Community Centre. This has been made possible by participating businesses Burgess Salmon, PWC, Bristol Port Company, SevernNet and GWR.

Christmas Circus Extravaganza

The whole of Coniston Primary School was treated to an unforgettable Christmas adventure. Having received an in-school rail safety, confidence and behaviour workshop, over the course of 2 days in December, all 187 students took the train to Bristol Temple Meads and walked to the adjacent Loco Klub. Here they took part in a magical Christmas Craft Workshop and were treated to a special performance by the incredible Invisible Circus.

“The team at Platform have been outstanding from start to finish. Emilie provided a brilliant and informative assembly, full of enthusiasm and fun. The safety messages were put across really well and that was evident when we were stood with 60 children on the platform. I can’t express the importance of this trip to the children of Coniston. The vast majority have never been on a train, and some may never go on one again. However, the two days were well organised, and the children had such a special time that they will remember this experience forever. The circus acts, the Christmas crafts and the presents added to a truly wonderful experience, and I have never seen so much enjoyment on a school trip. Thank you to everyone involved. This means so much to my children and the impact this will have has been huge!” Alan Walters – Headteacher at Coniston Primary School

Into Film Festival Railway Children

Two classes of students from Worle Village Primary enjoyed a special screening of “the Railway Children Return” at Cineworld in Weston-Super-Mare as part of the Into Film Festival, a free, annual nationwide celebration of film and Education for 9–15-year-olds.



Young people wowed by circus performances at Loco Klub

Time Traveling

Parson Street Primary school travelled to Worle for a history day, hosted by Historic England. The day focused on the experience of evacuees in World War 2 and the students re-enacted their experience. Being able to do this by rail made the event even more significant for the students, as this was the way most children were evacuated at that time.

On another day, 60 students from May Park Primary School travelled with the team into Bristol Temple Meads, where half the students joined Historic England for a heritage walk, whilst the other half joined Platform at the Loco Klub for a Bristol History lesson, before swapping at lunch time and repeating.



A scenic walk through Bath on the way to the Egg Theatre

An 'Eggcellent' time in Bath

Chandag Infant School travelled to Bath for a theatrical workshop at the Egg Theatre, a centre for creativity, innovation and young people at the Theatre Royal.

Epic Engineers at Severn Beach

Severn Beach has provided the destination for a range of visits, including an engineered focus visit looking at the Prince of Wales Bridge and an opportunity to shout Welsh phrases to our neighbours across the water!

Moreover, the location has proved incredibly popular for historical visits, with a focus on how Severn Beach became a popular pleasure beach destination, and how this evolved and changed over time, aided by the rail industry.

What Young People Say About Platform

“fun exciting, amazing, good, fantastic, awesome, great, excellent, fast, trainy, brilliant, exciting, kind phenomenal, relaxing, educational, perfect, interesting, safe, discovery.”

Award Success

The Platform team were proud winners of the 'Influencing Positive Change and Sustainability' award at the national Community Rail Awards



Platform delivery across the Severnside Community Rail Partnership area 2022/23

Number of students delivered to in total: **1,676**

Educated in workshops: **1,268**

Educated in assemblies: **127**

Educated in a dedicated Lesson: **60**

Educated in another way: **221**

Taken on Train trips: **1,209**

Community Art Schemes

Community Artwork

We like to celebrate the vibrant communities surrounding the stations, through eye catching, locally inspired art works. This is achieved by bringing together local stakeholders to form a steering group who decide on the themes and styles reflective for their community. They shortlist artists, generally championing someone from the local area.

Four new art schemes, plus an arts trail map have been installed at local unstaffed stations over the past year:

'In Our Hands' is a photographic display by artists Katie Hanning & George Dawes at Patchway station in South Gloucestershire. The photographs depict the phrases 'Together We Are Stronger' and 'The Future Is In Our Hands' in British Sign Language, each photograph showing a pair of hands signing the letters.



Second place

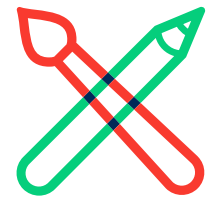


Pioneers of the Railways' gallery at Filton Abbey Wood is a growing exhibit created by artist Valentina Paz Huxley to celebrate individuals from under-represented backgrounds who have strived for progress and made a difference on the railways. Two new portraits and an exhibition booklet were unveiled at the Department for Transport's Afternoon Tea event in September, and we have new portraits to be revealed in to 2023.



A shipping container at Yatton Station had a makeover. The container which stores adapted bikes for the Strawberry Line Cycle Hire was deemed a bit of an eye sore. Local artist Damien Jeffery was selected from a shortlist for his life-like and colourful style. Damien's mural highlights the local flora and wildlife as well as acknowledging the heritage of this much-loved station.





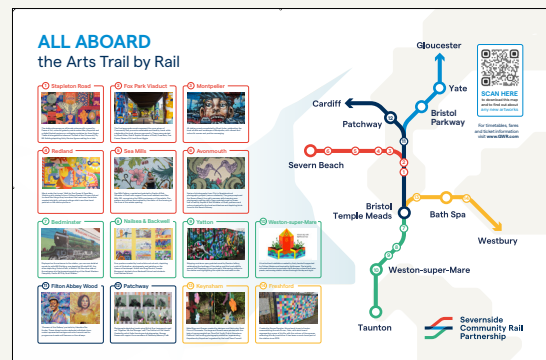
Lighthouse Garden at Weston-super-Mare station, created as part of the Weston Glow festival will remain in situ permanently.



Nailsea and Backwell Station had artworks responding to the theme 'Landscape'. The location of the station gives long ranging views across North Somerset, allowing lots of inspiration for the two schools and two artists selected. The works are a mix of photography, oil painting, illustration and drawing.



Design of an Innovative Arts Trail with a map of community artworks on and around stations in the Severnside Community Rail Partnership Area, with a permanent display at Bristol Temple Meads station.



Enhancing Stations with the Support of Volunteers

Throughout 2022, volunteers from across the Severnside Community Rail Partnership area rolled up their sleeves, applied sun-cream and made the very best of creating attractive, bio-diverse station gardens.

The exceptionally dry summer, a warm, damp autumn and sub-zero winter temperatures have made for a far-from-easy year for gardening, yet the friendship and camaraderie experienced through being part of a station adoption group means so many remain committed to making their local station a focal point.

Activity around the stations included:

Yatton and Clifton Down stations have new Bee Friendly Planters, filled with gorgeous pollinating plants and flowers to support our fuzzy friends to thrive.



At Keynsham station, a special planter constructed by the Somerdale Shed group was installed in the memory of Dee James, community stalwart and lead station volunteer for Keynsham in Bloom.

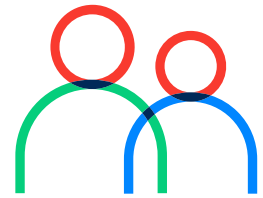
Freshford station received a refresh this year with a lick of paint and a new replica heritage station sign made by David Gatrell of the family run engineers AJ Wells and Sons Ltd. The sign was created in the traditional enamel blue with white letters, looking very smart at the rural and bijou station surroundings.



The Secret Garden at Avonmouth continues to thrive under the custodianship of Incredible Edible Bristol, providing produce for the nearby Community Centre and welcoming local people to enjoy the space and a friendly chat during Wellbeing Wednesday sessions.



Incredible Edible volunteers at Avonmouth station's Secret Garden



Community Payback

The Partnership continues to sponsor groups of supervised people on probation to attend placements in railway settings as part of their community sentence under the Community Payback Unpaid Work Scheme. Much of the activity in early 2022 focused on enhancing the environment at Stapleton Road station and the adjacent Fox Park Viaduct.

A new, female only, placement has recently been established at Weston-Super-Mare. Known as the Open Return Garden, women attending the placement assist with the development of a garden space at the station, supported by female supervisors representing local organisation Grow Feral. The ladies on probation are given the opportunity to develop vocational skills to help them progress into work, including working towards the Highfield Level 1 Award in Personal Development for Employability, Highfield Level 2 Diploma in Work-based Horticulture.

“This has helped with my head too. It’s been good for my mental health; I feel much better”.

“I’ve learnt a load of new things, and I’ve met you guys which has been really nice. It has made me want to carry on, I’ve learnt a lot and loved it.”

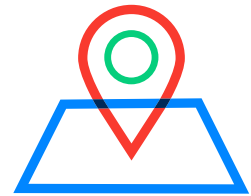
“I’ll definitely be back. I don’t want to let this go, I’ve enjoyed it too much”.

Quotes from Community Payback Service Users



Karen and Sam of Grow Feral supervise the Open Return Garden

Integrated Transport

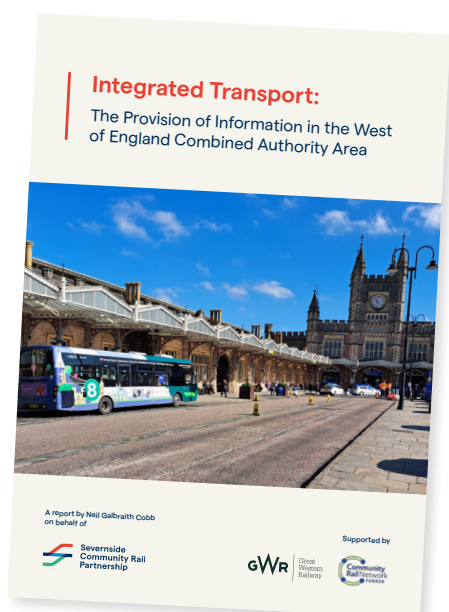


It is impossible to make a journey by rail without getting to and from the station and we want to ensure this can be done as seamlessly, sustainably and as safely as possible.

The Partnership arranges monthly rail integration forums covering each local authority. These are led by GWR with inputs from local authority representatives, bus operators and members of the local community. A main part of these forums is identifying gaps connecting bus services to key rail stations and helping to understand the possibilities for reinstating or introducing new bus links, the introduction of demand responsive transport and the promotion of various forms of active travel.

It has long been recognised there is scope to improve the provision of onward travel information presented at stations.

The Partnership commissioned a recent graduate Neil Galbraith Cobb to undertake a study looking at the current provision of onward travel and wayfinding information at stations and examining options for improvements. The final report, funded by Community Rail Network Integrated Transport Fund and GWR, can be downloaded via <https://sevenside-rail.org.uk/graduates-report-identifies-potential-improvements-to-passenger-information-to-support-more-integrated-journeys/>



Avonmouth and Severn Beach stations

Partnership working between Great Western Railway, Sustrans and the Severnside Community Rail Partnership unlocked funding to complete a project to install secure cycle parking at Avonmouth and Severn Beach stations.

New secure, sheltered cycle parking facilities provide space for up to 32 bikes at Avonmouth and 16 at Severn Beach station. This follows the installation of a new CCTV system at the stations in 2020, jointly funded by Bristol City and South Gloucestershire Councils, GWR and the Community Rail Development Fund.

Plans are afoot to secure funding to work closely with SevernNet and Bike Bristol to encourage more rail / cycle journeys for those commuting into the Enterprise Area from more central Bristol stations.

Looking Ahead to our work in 2023/24



Portway Park and Ride is set to become the first new station to open in the Severnside Community Partnership area since Yate and Worle opened over 30 years ago.

Scheduled to welcome passenger services by mid-summer, the new station will complement the bus park-and-ride facility - making leaving the car and travelling into the city centre or Clifton by rail an attractive new option for many.



Platform will continue its outstanding Community Rail Education programme for schools and those attending alternative education provision.

Plans are afoot for new resources, including a special 'myth busting' safety video.

The Partnership welcomes suggestions for new areas of work which fall within the four key pillars of the Community Rail Strategy, as set out on the right.

Subject to confirmation of funding, our plans for the year ahead include:

Providing a Voice for the Community

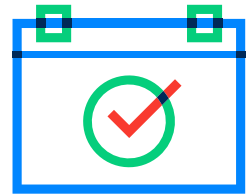
- Attending meetings of local rail user groups, transport forums and wider community organisations. Feeding into rail industry and other community transport providers
- Listening to young people engaging in our education programmes, sharing their thoughts and ideas with rail industry partners and wider travel providers

Promoting Sustainable, Healthy and Accessible Travel

- Delivering more Days Out by Train visits, extending the offer to groups supporting the visually impaired, neurodivergent, and people who have recently settled in the UK
- Promoting Walks from the Railway with leaflets and guided walks
- Collaborating with SevernNet and Bristol Bike to encourage more integrated, active, journeys between Central and East Bristol and the Avonmouth Severnside Enterprise Area
- The completion of a long-term scheme bringing environmental improvements to Stapleton Road station
- Promoting the opening of Portway Park and Ride station, and encourage community involvement

Bringing Communities together, Supporting Diversity and Inclusion

- Supporting existing and new station adopters with their station-based activities and by linking to wider community events and initiatives
- Promoting rail as a means of reaching the diverse range of cultural events taking place within walking distance of local stations across the region



- Hosting special events on trains, designed to introduce communities less familiar with using rail travel to their local service
- Converting a room at Bridgwater station to be available for use by the wider community
- Launching new community designed artworks at Bedminster, Bridgwater and Bath Spa stations
- Supporting Incredible Edible Bristol to facilitate 'Wellbeing Wednesday' sessions at the 'Secret Garden' food growing project at Avonmouth station and to continue to grow produce for distribution via the Avonmouth Community Centre, and developing the 'Open Return Garden' at Weston-super-Mare station, a project run by females for females

Supporting Social and Economic Development

- Monitoring local railway timetables and identifying opportunities as new travel patterns emerge
- Linking with Business Improvement Districts to encourage promotion of local independent traders within close proximity of the rail network
- Promoting small businesses at social enterprises on and around local stations, including the Strawberry Line Café and Cycle Hire at Yatton station, The Coffee Girl at Bradford-on-Avon station and KaffeKop at Keynsham station



Accounts and financial statement

Balance Sheet Year ended 31 March 2021

	£	£
	2022	2021
Fixed assets	-	-
Current assets		
Debtors	3,131	-
Cash at bank and in hand	263,934	169,954
	267,065	169,954
Creditors: amounts falling due within one year	(155,773)	(51,210)
Net assets	111,292	118,744
Total Assets less current liabilities	111,292	118,744
Represented by income and expenditure account	111,292	118,744
	111,292	118,744

The directors are satisfied that the company is entitled to exemption from audit under section 477 of the Companies Act 2006 relating to small companies.

Directors' responsibilities: The members have not required the company to obtain an audit in accordance with section 476 of the Companies Act 2006.

The directors acknowledge their responsibilities for complying with the requirements of the Companies Act with respect to accounting records and the preparation of accounts.

Profit and Loss Account Year ended 31 March 2022

	£	£
	2022	2021
Turnover	250,172	226,721
Administration expense	(257,632)	(251,862)
Operating profit/(loss)	(7,460)	(25,141)
Other Interest receivable	8	236
Profit/(loss) on ordinary activities before taxation	(7,452)	(24,905)
Corporation tax	-	-
Retained profit brought forward	118,744	143,649
Balance carried forward	111,292	118,744

These accounts have been prepared in accordance with the special provisions applicable to companies subject to the small companies' regime.

The Company has no recognised gains or losses other than the profit/loss for the above financial period.

None of the Company's activities were acquired or discontinued during the above financial period.

These financial statements were approved by Directors on 16 November 2022.

Year ended 31 March 2022 - Income and Expenditure Account

	£	£	£	£
Income	Project	General	Total 2022	Total 2021
Voluntary Contributions from Partners	-	69,000	69,000	74,000
Cross Country Grant	36,194	-	36,194	12,736
GWR Project Grants	133,948	-	133,948	79,482
Community Rail Network Grants	9,431	-	9,431	26,730
Network Rail Grant	-	-	-	20,000
Somerset Council Project Grant	1,250	-	1,250	-
Bristol City Council Project Grant	-	-	-	12,956
Bank Interest	-	8	8	236
Miscellaneous	26	323	349	817
Total	180,849	69,331	250,180	226,957
Expenditure	Project	General	Total 2022	Total 2021
Insurance	-	1,221	1,221	713
Travel & Subsistence	-	99	99	75
Stationery	-	3	3	627
Staff Expenses	10,636	297	10,933	1,113
Salaries	12,668	61,701	74,369	46,379
HM Revenue & Customs	556	2,705	3,261	11,541
Miscellaneous	2,047	904	2,951	1,209
Telephone/IT	2,640	3,332	5,972	2,750
Postage	-	-	-	34
Meetings/Events/Research	407	628	1,035	6
Accountancy & Payroll fees	-	2,051	2,051	1,932
Rent	-	1,219	1,219	2,255
Project Expenses	1,012	-	1,012	-
Training	-	954	954	-
Small Station Improvements:				
Severn Beach Line Stations	55,998	-	55,998	87,370
Other Bristol Local Stations	14,254	-	14,254	105
Other South Glos' Local Stations	-	-	-	156
Bath and NE Somerset Local Stations	2,975	-	2,975	24
North Somerset Stations	-	-	-	4,097
Community Payback Station Support	-	-	-	426
Other work and activities:				
Joint CRP Education Project	-	-	-	5,000
Build Back Soon Project	-	-	-	33,623
Fox Park Project	496	-	496	34,303
Young People Film	11,700	-	11,700	9,397
Avonmouth Community Centre	25,000	-	25,000	-
Education project	31,505	-	31,505	-
Other Projects and Community Activities	10,624	-	10,624	8,727
Total	182,518	75,114	257,632	251,862
Surplus/Deficit For The Year				
	(1,669)	(5,783)	(7,452)	(24,905)
Balance brought forward	70,186	48,558	118,744	143,649
Balance at 31 March 2022	68,517	42,775	111,292	118,744

Passenger Statistics

Office of Rail and Road station usage statistics

	2019/20	2020/21	2021/22
Avonmouth	127,142	46,076	88,332
Bath Spa	6,432,812	1,198,504	4,085,704
Bedminster	104,050	23,974	63,064
Bristol Parkway	2,371,812	366,904	1,414,120
Bristol Temple Meads	11,619,360	2,032,828	6,627,950
Clifton Down	727,774	168,394	400,730
Filton Abbey Wood	976,150	115,624	384,584
Freshford	55,454	13,218	34,112
Keynsham	532,966	87,304	298,478
Lawrence Hill	190,118	66,852	152,906
Montpelier	129,556	42,438	91,758
Nailsea & Backwell	519,574	85,382	298,332
Oldfield Park	359,846	90,958	238,768
Parson Street	173,832	29,702	101,482
Patchway	91,158	12,392	50,756
Pilning	710	210	418
Redland	120,642	33,332	83,576
Sea Mills	58,204	13,108	36,408
Severn Beach	301,154	98,726	180,444
Shirehampton	55,518	17,454	42,264
St.Andrew's Road	5,728	4,910	7,164
Stapleton Road	205,224	65,772	147,770
Weston Milton	79,060	26,354	66,964
Weston-Super-Mare	1,159,564	306,684	777,910
Worle	328,598	81,414	232,340
Yate	341,800	68,562	177,121
Yatton	500,316	101,442	332,736
Total - West of England	27,568,122	5,198,518	16,416,191

Wiltshire (selected)	2019/20	2020/21	2021/22
Avoncliff	23,448	6,088	18,812
Bradford-On-Avon	550,720	117,522	351,558
Chippenham	1,937,240	373,482	1,124,226
Trowbridge	917,458	252,156	640,376
Westbury	557,756	152,216	438,970

Somerset (selected)	2019/20	2020/21	2021/22
Bridgwater	363,828	133,410	351,620
Highbridge & Burnham	212,650	80,236	194,846
Taunton	1,585,206	364,244	1,196,802

Gloucestershire (selected)	2019/20	2020/21	2021/22
Cam & Dursley	225,792	42,818	131,894
Cheltenham Spa	2,590,718	462,294	1,793,710
Gloucester	1,546,910	394,698	1,213,642

Services	Calendar Year 2022 Journeys	% difference Calendar year 2019 (pre-Covid)
Bristol - Westbury local services	2,211,684	-20.5%
Cardiff - Portsmouth long distance	911,258	-18.5%
Severn Beach line	1,169,900	-17.9%
Bristol - Weston-super-Mare - Taunton	1,172,157	-15.0%
Bristol - South Wales	1,751,761	-9.9%
Bristol - Gloucester	1,083,425	-29.6%
Total West of England local/regional journeys	8,300,185	-18.5%

These figures are from GWR ticket sales allocated LENNON data and include only GWR journeys. Some journeys made for example on Rover tickets or employee passes, or on substitute buses, may not have been recorded. So the figures may underscore the total journeys, but this is unlikely to be significant.

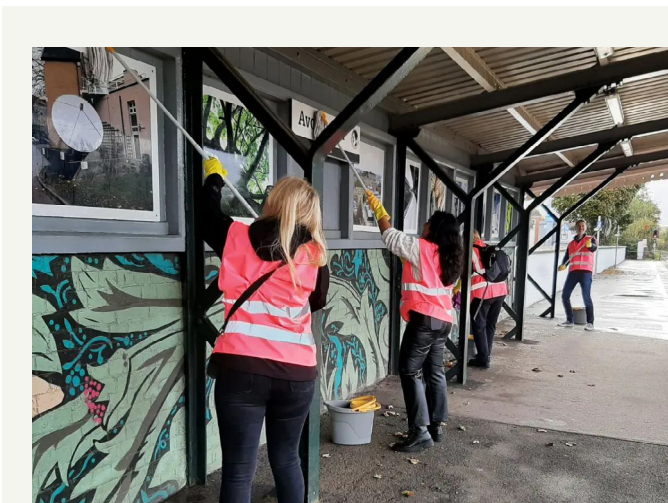
Note: the Severn Beach line has zonal fares, so individual station recorded figures may not be correct. Figures are from ORR Entries and Exits station usage, based on ticket sales allocated LENNON data

Rail Industry Partners Support Community Schemes

Sevenside Community Partnership has been delighted to accept the offer of voluntary support from our rail industry partners who helped out with projects during 2022/23. We are keen to hear from any organisation able to provide voluntary support to our schemes in the future.



Graham Stockbridge and Rachel Webbe of the Department for Transport helped out with a Days Out by Train trip to Weston-super-Mare



Department for Transport and GWR teams joined forces to give community artwork and clean and polish at Avonmouth station



Network Rail help station volunteers clean artwork at Redland station



David Jarman of the West of England Combined Authority helped out on a Days Out by Train trip to the Strawberry Line Café at Yatton station



A team from Network Rail and Mitey helped tidy up Stapleton Road station

Our principal funders and sponsors



Supported by

